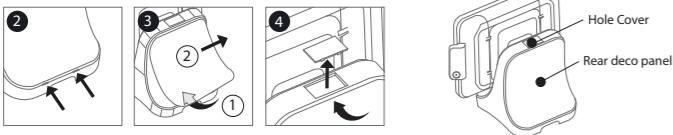


Installing Optional Items

Installing / Removing Hole Cover

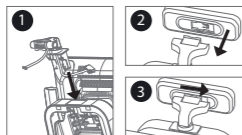
Remove the Hole Cover to install Customer display(VFD), 2nd display

- 1 Power off the product
- 2 Remove the cover in use of the groove shown in the picture 2
- 3 Rear panel separates from the body as shown on figures 1 and 2
- 4 Press the bottom part of the open Hole Cover to separate



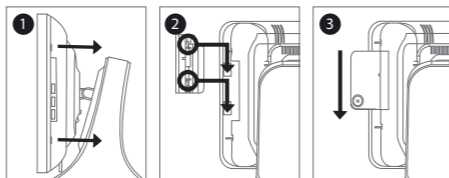
VFD

- 1 After removing VFD hole cover, mount VFD hinge and fix it with hand screws, and then assemble the rear deco panel.
- 2 Face the back of the VFD to the front of the mount with the same shape
- 3 Insert the VFD as shown on Figures 2 and 3
- 4 Connect No.14 cable with I/O port in the back side.



MSR

- 1 Open the right side cover to install the MSR as shown in figure 1
- 2 Insert the MSR (Hook side in) to the base of the monitor
- 3 Slide the MSR down to secure the position
- 4 Connect No.2 cable with I/O port in the right.



Product Specifications

Model	P2CA-100
System Configurations	
Processor	Rockchip 3188 / Quad core 1.6G
Storage Device	Built-in / 16GB NAND Flash
Memory	2GB
OS	Android 4.2.2
Display	
Main Display	15" with WLED Backlight (1024 x 768), Single LVDS 24bits / Supports Tilt (0° ~ 53°) 10°~ 60° Viewing Angle, 300:1 Contrast, Above 350cd/m2 Brightness Capacitive normal type Touch Panel
I/O Interfaces	
LAN	1 x 10/100/1000Mbps Base T Ethernet
Serial Ports	2 x DB9 and 1 x RS232 Serial Ports, Powered on Pin 9 (DC+5V or DC+12V)
USB	4 x USB2.0
Special USB	1 x mini USB type A, B
Cash Drawer	1 x RJ11 (12V) on the Right Rear Side
Audio Ports /Speaker Out	1 x Mic-in, 1 x Audio-out / 1watt Speaker (Stereo) X 2EA
Options	
Customer Display	VFD Type (20 x 2), Alphabet & Numeric, Supports 15° ~ 90° Tilt and 25° Swivel
Touch Panel	Support 5-wired resistive Flat Touch panel
MSR	ISO7811, All Track / USB (default) and Serial (CMOS setting) interface / Bi-Directional reading, min. 1million times reading Card reading speed 3inch to 60inch/sec
Smart Card Reader	ISO7816 EMV level 1 Supports PC/SCI/Personal Computer/Smart Card)
Dallas Reader (i-Button)	Dallas Reader (i-Button reader)
Physical Dimension	
Dimension / Weight	354 x 246 x 339 (W x D x H, mm) / 5.5 (Kg)
Environment	
Color	White & Black, All Black, White & Red, White & Orange, White & Green
Power Supply /Temperature	100V AC ~ 240V AC, DC12V-SA Adaptor, 60 watt / Operating: 0 ~ 40°C, Storage: 0 ~ 60°C
Humidity / Warranty	10 ~ 80% Humidity / 2 years
Certifications	CE, FCC, CB, KC
UPS Battery	optional

Installation Guide

POS 100 Series



Safety Instructions

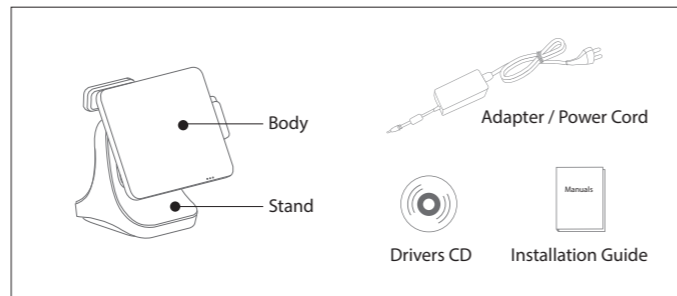
Read all safety precautions before using the POS system.

- 1 Before connecting, make sure the operating voltage is AC100 ~ 240V. Otherwise, you may damage the system.
- 2 Do not install the system in an extremely hot or cold place.
- 3 Avoid exposing the product in direct sunlight or in an enclosed space for a long period of time.
- 4 Be careful not to place the system near other high-frequency electromagnetic devices; there is a strong possibility it will lead to a system malfunction or system error.
- 5 Do not place heavy objects on the system.
- 6 Prevent external substances from entering the system.
- 7 Do not change the motherboard's battery by yourself. It can damage the system.
- 8 Before disassembling the system, disconnect all power and cables.
- 9 Do not remove or repair the system by yourself. We highly recommend an engineer's assistance or an experienced technician to open the system, especially the LCD and touch panels which could be easily broken.
- 10 An electrical outlet is needed near the device and it should be easily accessible.
- 11 There is risk of an explosion, if the battery is replaced, incorrectly. Dispose the used batteries according to the manufacturer's instructions.
- 12 This device complies with the EMC (Electromagnetic Compatibility) Regulations, for business purposes. Distributors and users are advised of this matter. Please exchange the equipment if you mistakenly sold or purchased this product.

POS terminal security guideline

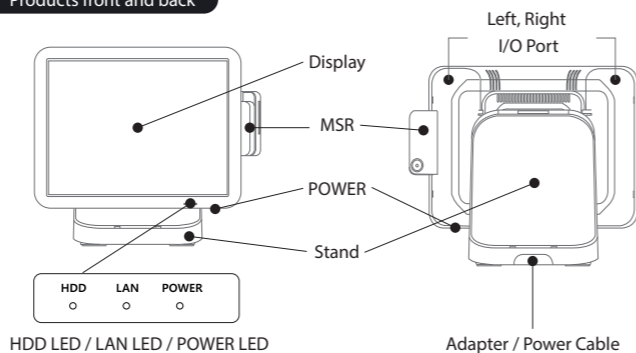
- ⚠ Operating System Security
 - When using an universal OS system with this system,
 - System-provided and managed by the operating system's default security settings must be configured.
 - When using a wireless network and internet
 - Proven safety standard encryption algorithms to be used and the standard authentication protocols.
- ⚠ User Security
 - Tapping and Skipping of the system is the operator responsibility
 - The system operates in general purpose operating system, the following conditions must be included.
 - Firewall must be set
 - Periodically the OS security patches should be applied
 - A well secured program is needed when working remotely

Product Composition

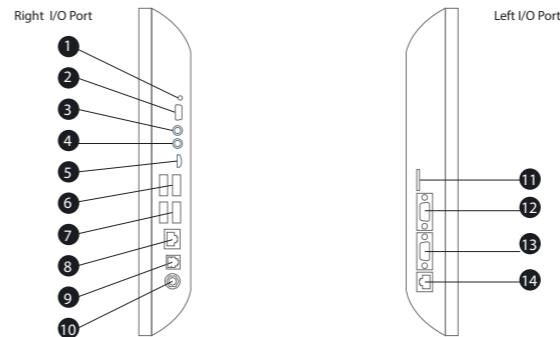
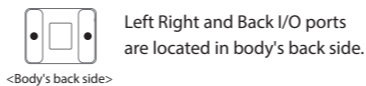


Product Appearance

Products front and back



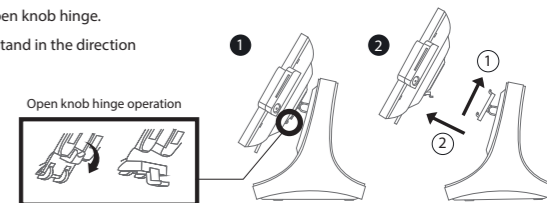
I/O Port



Description		
1 Power swtich	7 USB3,4	13 COM2
2 MSR (USB or Serial COM6)	8 LAN	14 COM3
3 MIC	9 CASH DRAWER	
4 SPEAKER	10 POWER (DC 12V)	
5 OTG USB	11 SD Memory	
6 USB1,2	12 COM1	

Body and Stand Installation

- 1 Rotate the open knob hinge.
- 2 Remove the stand in the direction of the arrow.



Turning the power on

Connect the power cord

Before connecting the power cord, install all optional items and connect DC jack adapter.



Power On

Please turn the power on after installing all optional items.
 ※ Connect adapter and body first before connecting power cord to a 220V (110V) outlet. Power supply is located on the lower right side of the monitor. When power is connected, the LED will light up. Each LED lamp will indicate the operation status.

- 1 HDD LED : Operation mode (RED)
- 2 LAN LED : LAN Connection (ORANGE)
- 3 POWER LED : Power Connection (BLUE)

