

Poindus Systems Corp. Headquarters

5F, No.59, Ln. 77, Xing-Ai Rd., Neihu Dist., Taipei City 114, Taiwan. R.O.C

Tel : +886-2-7721-4688

Fax: + 886-2-7721-2289

sales@poindus.com

FRANCE

104 Avenue de France, 75013 – Paris

Tel: +33 (0)1 46 46 11 89

fr.sales@poindus.com

GERMANY

ADASYS GmbH Elektronische Komponenten Max-Planck-Str. 10 70806 Kornwestheim

Tel: + 49 7154 8300 0

Fax: +49 7154 8300 599

info@adasys.de

UK

8d, Britannia Ind Est. 117-125 Leagrave Rd Luton LU3 1RJ

Tel: +44 330 555 0081

Fax: +44 330 555 0082

puk@poindus.com

USA

13949 Ramona Ave. Suite H Chino, CA 91710

CA: +1 (855) 922 0077

FL: +1 (727) 532 8342

Fax: +1 (855) 922 0077

sales@poindus-usa.com

<http://www.poindus.com>

Poindus
Think Global with Local Touch



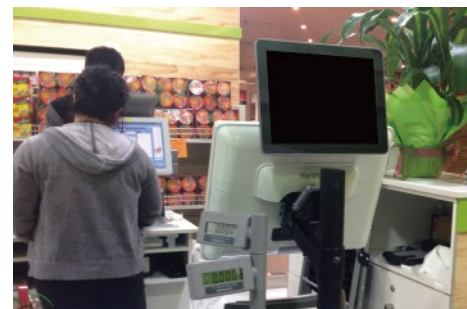
We innovate to refine the next generation

DISPLAY SOLUTION

Poindus
Think Global with Local Touch

Application

Poindus full range of displays are designed to fulfill the demands of Retail, Hospitality, Human Machine Interface and virtually any related industrial scenarios; facilitating the Integration of displays as modular components in all aspects of the solution implementation. Offering multiple mounting options that ensure installation flexibility (wall and pole mount with standard or custom pattern configurations). Poindus Displays provide fully functional interfaces, secure cable management and compact footprints, we're ready to service any environment for the best user experience.



Retail

Poindus Small display have deployed in Russia & Australia's supermarket, & department store.

Hospitality

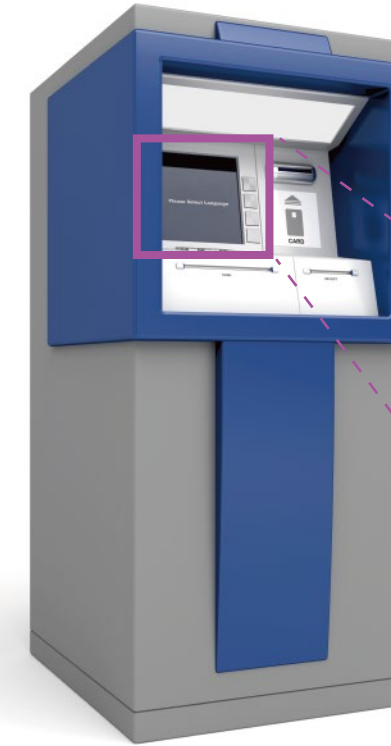
Our displays are suitable for all kinds of F&B environment, food court or restaurant, as the 2nd displays.





Self Service System

Reducing business costs through automation is simplified with the implementation of strategically sited self-service systems. A single multi-function touch point, provides efficient user experience and high user satisfaction reducing wait times and also frees employees from mundane and repetitive task.



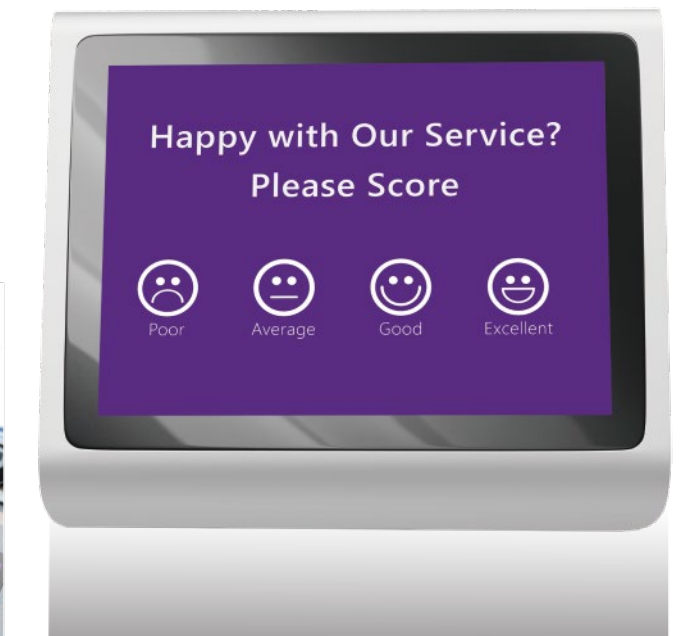
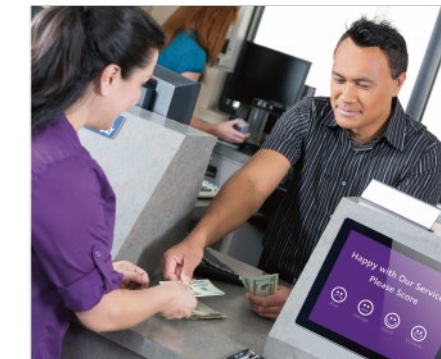
*Zoom in

Information Kiosk

Poindus Display and Box PC combinations allow for on-demand advanced multimedia content delivery solutions through information touch points for internal or external applications, providing convenience and enhancing the user experience.

Interactive Solutions

Utilizing the latest display technology can increase user engagement and loyalty with Interactive touch points that offer instant customer service and convenience. Interactive e-surveys about products and services can also provide useful data for customer behavior analysis.





*Optional Pole Stand for all small display

*White Color support by request

Small Size

Poindus small size displays are great way to express and promote your business, product and services to your customers. Thanks to low power consumption, you can choose USB interface or VGA type to accompany your system. In addition to our non-touch models, we also offer resistive or capacitive touch options to allow interaction that can be customer survey, self-service or even machine control in limited space environments. With our optional anti-glare treatment, reflections can be reduced. All our small displays been designed with cable management in mind either with desk stand, pole base or VESA mounting option to reduce cable clutter and have more esthetic look.

If our standard models not suiting your need, do let us know for customized solution. Our modular design allows us to make changes to suit your needs.



		M363	M434	M354	M454	M365	M465
Display Size		7"	8"	8"	8"	10.4"	10.4"
Ratio		16:9	4:3	4:3	4:3	4:3	4:3
Touch Type	Non-Touch	Available	Available	Available	Available	Available	Available
	Resistive	N/A	N/A	Available	Available	Available	Available
	PCAP	N/A	N/A	Available	Available	Available	Available
True-Flat / Bezel		True Flat	Bezel	True Flat	True Flat	True Flat	True Flat
Ingress Protection		IP54 (Front)	N/A	IP54 (Front)	IP54 (Front)	IP54 (Front)	IP54 (Front)
Resolution		800 x 480	800 x 600	800 x 600	800 x 600	800 x 600	800 x 600
Brightness (nits)		350	250	250	250	250	250
Viewing Angle		60/70/70/70 degree	50/70/70/70 degree	50/70/70/70 degree	50/70/70/70 degree	50/60/70/70 degree	50/60/70/70 degree
Contrast Ratio		500 : 1	500 : 1	500 : 1	500 : 1	500 : 1	500 : 1
Response Time (ms)		20	25	25	25	20	20
Interface							
Video Signal	VGA	Available	Available	Available	Available	Available	Available
	USB	Available	Available	Available	Available	Available	Available
Power		12V DC Jack (VGA)	12V DC Jack (VGA)	12V DC Jack (VGA)	12V DC Jack (VGA)	12V DC Jack (VGA)	12V DC Jack (VGA)
		5V USB (USB)	5V USB (USB)	5V USB (USB)	5V USB (USB)	5V USB (USB)	5V USB (USB)
Physical Dimension							
Dimensions (W x H x D) mm		184.5 x 118 x 34.5	192 x 186.6 x130	202 x 163 x 34.5	202 x 189.7 x 142	244 x 197.4 x 36.4	244 x 210.3 x 142
Weight (N. W.) (Kg)		0.5	0.7	0.7 (non-touch)	1.25 (non-touch)	0.9 (non-touch)	1.3 (non-touch)
				0.85 (with touch)	1.4 (with touch)	1.1 (with touch)	1.7 (with touch)
Environment							
Operating Condition		0°C~40°C	0°C~40°C	0°C~40°C	0°C~40°C	0°C~40°C	0°C~40°C
Storage Condition		-10°C~50°C	-10°C~50°C	-10°C~50°C	-10°C~50°C	-10°C~50°C	-10°C~50°C
Power Consumption		6W (VGA)	6W (VGA)	6W (VGA)	6W (VGA)	8W (VGA)	8W (VGA)
		2.5W (USB)	2.5W (USB)	2.5W (USB)	2.5W (USB)	2.5W (USB)	2.5W (USB)
Certifications							
EMI / Safety		CE, FCC, LVD	CE, FCC, LVD	CE, FCC, LVD	CE, FCC, LVD	CE, FCC, LVD	CE, FCC, LVD
Options							
VESA Support		75*75	75*75	75*75	75*75	75*75	75*75
Base		Optional	Integrated	M454	Die-Cast Aluminum Base	M465	Die-Cast Aluminum Base
Pole Stand		Optional	N/A	Optional	N/A	Optional	N/A



*White Color support by request

Large size

Poindus big size displays offer robust solution for your business needs with touch screen convenience. With the number of different accessories offered such as MSR, fingerprint reader, iButton, smart card reader and customer display, no matter retail, hospitality or automation applications can be fully supported as your needs. We offer the most commonly accepted VGA and DVI-D interface with locking for secure connection. All our displays been designed with cable management in mind either with desk stand or VESA mounting option to reduce cable clutter and have more esthetic look neatly securing the cables out of the way. If our standard models not suiting your need, do let us know for customized solution. Our modular design allows us to make changes to suit your needs as well as our open frame solutions custom build to your specifications can fulfill your unique applications from Kiosk to digital signage installations.



	M337	M437	M367	M467	M458	M168
Display Size	15"	15"	15"	15"	17"	18.5"
Ratio	4:3	4:3	4:3	4:3	4:3	16:9
Touch Type	Resistive	Available	Available	Available(ELO)	(Project)	N/A
	PCAP	N/A	N/A	Available	Available	Available
Ingress Protection	-	-	IP54 (Front)	IP54 (Front)	IP54 (Front)	IP54 (Front)
Resolution	1024 x 768	1024 x 768	1024 x 768	1024 x 768	1280 x 1024	1366 x 768 / 1920 x 1080
Brightness (nits)	250	250	250	250	250	250
Viewing Angle	70/70/80/80 degree	70/70/80/80 degree	70/70/80/80 degree	70/70/80/80 degree	80/80/85/85 degree	80/80/85/85 degree
Contrast Ratio	700 : 1	700 : 1	700 : 1	700 : 1	1000 : 1	1000 : 1
Response Time (ms)	16	16	16	16	5	5
Interface						
Video Signal	VGA, DVI-D	VGA, DVI-D	VGA, DVI-D	VGA, DVI-D	VGA, DVI-D	VGA, DVI-D
Power	12V DC Jack	12V DC Jack	12V DC Jack	12V DC Jack	12V DC Jack	12V DC Jack
Physical Dimension						
Dimensions (W x H x D) mm	365.7 x 323.5 x 51	365.7 x 323.5 x 199.7	361.6 x 278.6 x47.1	361.6 x 339.3 x 220	399.2 x 381.5 x 200	472 x 293 x 43
Weight (N. W.) (Kg)	3.5	4.6	3.3	4.7	5.86	5.86
Environment						
Operating Condition	0°C~40°C	0°C~40°C	0°C~40°C	0°C~40°C	0°C~40°C	0°C~40°C
Storage Condition	-10°C~50°C	-10°C~50°C	-10°C~50°C	-10°C~50°C	-10°C~50°C	-20°C~60°C
Power Consumption	Max. 20W	Max. 20W	Max. 20W	Max. 20W	Max. 20W	Max. 30W
Certifications						
EMI / Safety	CE, FCC, LVD	CE, FCC, LVD	CE, FCC, LVD	CE, FCC, LVD	CE, FCC, LVD	CE, FCC, LVD
Options						
VESA Support	75*75	75*75	75*75	75*75	100*100	75*75
Base	M437	Plastic Base	M467	Die-Cast Aluminum Base	Plastic Base	Optional



Box PC

Poindus box PC offers small yet powerful solution for your retail, hospitality, and automation applications. Offering USB, RS232 COM, LPT printer, PS2 and cash drawer ports to allow multiple device connectivity and with its fanless closed enclosure design, maintenance free operation under harsh environments is ensured. VESA mounting is offered at the bottom of the unit if counter space is limited so the device can be under the table, inside machine enclosure, behind the display or on the wall. Easy to remove motherboard tray makes servicing easy. No matter your application, Poindus box PC will deliver satisfaction.



Fanless



Fanless



Fanless



M842		M843MY		M843MV
Processor	Intel® Celeron J1900 2.0GHz ,Cache 2MB	Intel® Celeron J1900 2.0GHz ,Cache 2MB	Intel® Core i3-3217U 1.8GHz,Cache 3MB	
Chipset		CPU Integrated	Intel® HM76	
System Memory	DDR3L SO-DIMM, up to 8GB			
Storage	1 x 2.5" SATA HDD or SSD			
Flash Memory	1 (Alternative)			
OS Support	Windows 10 IOT, Windows 8.1, Windows 7, POSready 7, Linux			
I/O Ports				
USB	5 x USB 2.0 (4 Rear Panel, 1 front Panel-Optional)	1 x USB 3.0 (Rear Panel)	5 x USB 2.0 (4 Rear Panel, 1 front Panel-Optional) 2 x USB 3.0 (Rear Panel)	
Serial/COM	3 x RS-232(RJ48 connector),COM1/2/3 Pin10 w/RI/5V/12V Selectable by BIOS (default is RI)		3 x RS-232 (RJ48 connector),COM 1 and COM2 +5V, COM3 +12V, Power Enabled by BIOS	
VGA			1	
LAN Port			1	
Cash Drawer Port			1	
DC Jack			1	
LPT Port			1 (Optional)	
PS2			1 (Optional)	
Audio out/MIC In			1 (Optional)	
Power LED			1 (Optional)	
WiFi	N/A	Mini PCI-E WLAN CARD IEEE 802.11 b/g/n with 2 pcs Antenna (Optional)		
Power Switch	1 + 1 Optional with front USB Port	1		
Power Adapter	External power adapter, 65W/19V	External power adapter, 65W/19V	External power adapter, 90W/19V	
Certifications				
EMC Safety	CE, FCC, LVD, RoHS			
Physical Dimension				
Dimension(Wx H x D)	195 x 165 x 45 mm		210 x165 x 55 mm	
Weight (N. W.) (Kg)	1.3 Kgs (2.86Lbs)		1.66 Kgs (3.65 Lbs)	
Environment				
Operating Temperature	0 °C ~ 35°C			
Storage Temperature	-10°C ~ 60°C			
Operating Humidity	20% – 85% RH non condensing			
Storage Humidity	20% – 85% RH non condensing			
Optional Accessories				
Alternative Front Cover	Front Power LED, Power Switch & USB Port(Optional)		Front Power LED & USB Port(Optional)	